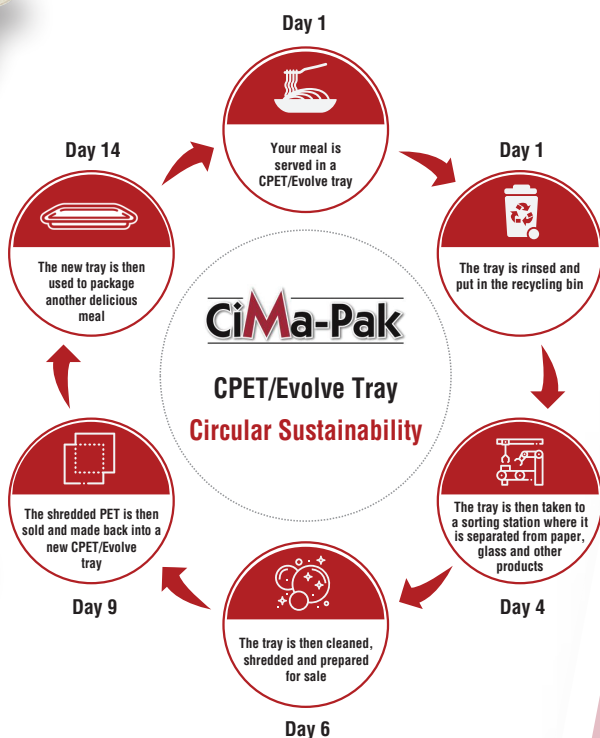


Please Recycle!



Circular Sustainability

Evolve CPET Trays, are made with up to 80% recycled PET and are 100% recyclable into the same quality tray over and over again.

CiMa-Pak CPET TRAYS ...

- *same great quality, different colours*
- *keep food fresh*
- *take 2 seconds to seal*
- *are easy to open*
- *are 100% leak proof when sealed*
- *are reliable and affordable*
- *ensure quality presentation*
- *are all recycled & recyclable 100%*
- *excellent for reheating in the microwave or regular oven*



Evolve CPET Trays – same great trays, different colours - always in stock

- Evolve CPET trays are perfect for prepared meals — fresh, frozen, MAP or SKIN*
- ready for reheating in a microwave or conventional oven
- each compartment can be sealed separate from the other ensuring no leaks from store to home
- temperature resistance from -40°F (-40°C) to 400°F (200°C)
- shatter proof, knife and fat resistant

*SKIN - certain 1 compartment trays only

	Part. No.	Dimensions	Volume		Part. No.	Dimensions	Volume
	0095-1L	95 x 60 mm 3.7" x 2.3"	215 mL 7 oz		2187-1I*	187 x 137 x 36 mm 7.3" x 5.4" x 1.4"	620 mL 21 oz
	0126-1N	126 x 43 mm 4.9" x 1.7"	345 mL 11.7 oz		2200-1B	201 x 155 x 45 mm 7.9" x 6.1" x 1.8"	940 mL 32 oz
	0160-1N	160 x 50 mm 6.3" x 2.0"	620 mL 21 oz		2200-1C	201 x 155 x 35 mm 7.9" x 6.1" x 1.4"	750 mL 25.2 oz
	1171-1B	170 x 98 x 34 mm 6.7" x 3.9" x 1.3"	365 mL 12.4 oz		2200-1I	201 x 155 x 55 mm 7.9" x 6.1" x 2.1"	1120 mL 38 oz
	2171-1F	171 x 127 x 49 mm 6.7" x 5" x 1.9"	665 mL 22.5 oz		2202-1A	202 x 107 x 44 mm 7.9" x 4.2" x 1.7"	645 mL 22 oz
	2171-1K	171 x 127 x 35 mm 6.7" x 5" x 1.4"	500 mL 16.9 oz		2208-1A	209 x 159 x 34 mm 8.2" x 6.3" x 1.3"	800 mL 27 oz
	2171-2B	171 x 127 x 38 mm 6.7" x 5" x 1.5"	315/ 215 mL 10.7/ 7.3 oz		2208-1B	209 x 159 x 45 mm 8.2" x 6.3" x 1.8"	1080 mL 36.5 oz
	2187-1G*	187 x 137 x 45 mm 7.3" x 5.4" x 1.7"	765 mL 26 oz		2208-1B	209 x 159 x 45 mm 8.2" x 6.3" x 1.8"	1080 mL 36.5 oz

*Lids are available for these trays.

Evolve CPET Trays (continued)

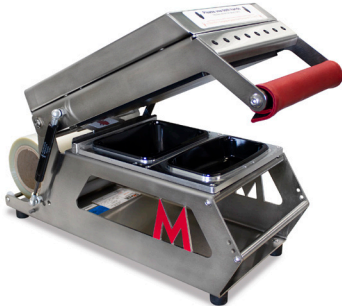
Please Recycle!

	Part. No.	Dimensions	Volume		Part. No.	Dimensions	Volume
	2208-2E	209 x 159 x 40 mm 8.2" x 6.2" x 1.6"	500/ 335 mL 16.9/ 11.3 oz		2227-3A*	227 x 178 x 30 mm 9" x 7" x 1.2"	400/ 210/ 150 mL 13.5/ 7/ 5 oz
	2208-3C	209 x 159 x 40 mm 8.2" x 6.2" x 1.6"	760 mL 26 oz		2227-3C*	227 x 178 x 40 mm 9" x 7" x 1.5"	365/ 305/ 195 mL 12.4/ 10.3/ 6.6 oz
	2220-1J	220 x 130 x 50 mm 8.6" x 5.1" x 1.9"	965 mL 32 oz		2227-3F*	227 x 178 x 43 mm 9" x 7" x 1.7"	545/ 280/ 200 mL 18.4/ 9.5/ 6.7 oz
	2227-1D*	227 x 178 x 50 mm 9" x 7" x 2"	1415 mL 47.8 oz		2227-3G*	227 x 178 x 42 mm 9" x 7" x 1.6"	450/ 375/ 235 mL 15.2/ 12.7/ 7.9 oz
	2227-1E*	227 x 178 x 35 mm 9" x 7" x 1.4"	1030 mL 34.8 oz		2235-3N	235 x 184 x 48 mm 9.2" x 7.2" x 1.9"	390/ 390/ 505 mL 13.2/ 13.2/ 17 oz
	2227-1F*	227 x 178 x 59 mm 9" x 7" x 2.3"	1660 mL 56.1 oz		2277-1A	277 x 213 x 52 mm 10.8" x 8.3" x 2"	2270 mL 77 oz
	2227-1S*	227 x 178 x 40 mm 9" x 7" x 1.6"	1185 mL 40.1 oz		2325-1A	325 x 265 x 49 mm 12.8" x 10.4" x 1.9"	3350 mL 113 oz
	2227-2K*	227 x 178 x 43 mm 9" x 7" x 1.7"	455/ 610 mL 15.4/ 20.6 oz		2325-1B	325 x 265 x 79 mm 12.8" x 10.4" x 3.1"	5100 mL 172 oz
	2227-2L*	227 x 178 x 30 mm 9" x 7" x 1.2"	400/ 330 mL 13.5/ 11.2 oz		2325-1C	325 x 265 x 60 mm 12.8" x 10.4" x 2.4"	3885 mL 131.4 oz

*Lids are available for these trays.

**Turn-key solutions from CiMa-Pak.
Tray sealer, trays and film that work together.**

Plug in (110v), heat up and seal CiMa-Pak trays.



CiMicro: Starter kit includes the tray sealer, 1 frame, trays and film.

- Ideal for new operations, prototyping, low volume enterprises or as a back up to a larger system
- Sealing 50-150 ready meal trays per day
- Affordable turn-key solution to enhance your prepared meal presentation
- Small footprint allows unit to be used in the smallest of production areas
- Simple to use and maintain
- Straight cut of the film

**CiMatic: Automatic, continuous motion.
Gas Flush option available.**

- Ideal for high volume enterprises as this machine does all the work for you quickly and efficiently
- Great for a central kitchen, meals on wheels, airline meal preparation, school lunch programs and frozen food producers and more
- Seal ready meal trays fast and effectively at speeds up to 20 per minute
- Easily rolls into place for production and rolls out of the way when not needed
- Straight cut of the film
- Compressor included
- Gas flush option extends shelf life



Shown here
with optional
print head.



**CiMotion: Tabletop model. Turntable style. One operator.
Gas Flush option available.**

- Ideal for medium to high volume enterprises
- Designed to produce meal trays fast even in the smallest of facilities.
- Touchscreen interface controls all unit functions.
- Easy to change moulds for greater flexibility.
- Die cut allows for great product presentation
- Faster packaging speeds than drawer style.
- Great for retail
- A compressor is required but not included.
- Gas flush option extends shelf life

NEW at CiMa-Pak, in-house film converting (slitting and rewinding) to ensure the film size matches the trays and tray sealer that fits your culinary creations.

Visit our website at **cima-pak.com** to choose from our versatile selection of tray sealers.

MONTREAL • TORONTO • CALGARY • NEW YORK

CiMa-Pak
Toll Free: 877-631-2462
cima-pak.com